



Interchangeable Truck Body System

HOIST SYSTEM



Switch-N-Go.com • 888 311-0867



Features

- Ideal for chassis cab vehicles with a GVWR of 10,000-33,000lbs
- Compatible with vehicles ranging from 60" CA to 138" CA
- Quickly and safely change bodies in *under three minutes*
- Easy interior cab controls for tight city & urban spaces
- Extremely rugged and powerful light weight system
- Electric and full hydraulic models available
- Variety of dump capacities up to 12.5 tons
- Hoist lifts up to 50° dump angle

Distributor Info:



TO FIND A DISTRIBUTOR IN YOUR AREA



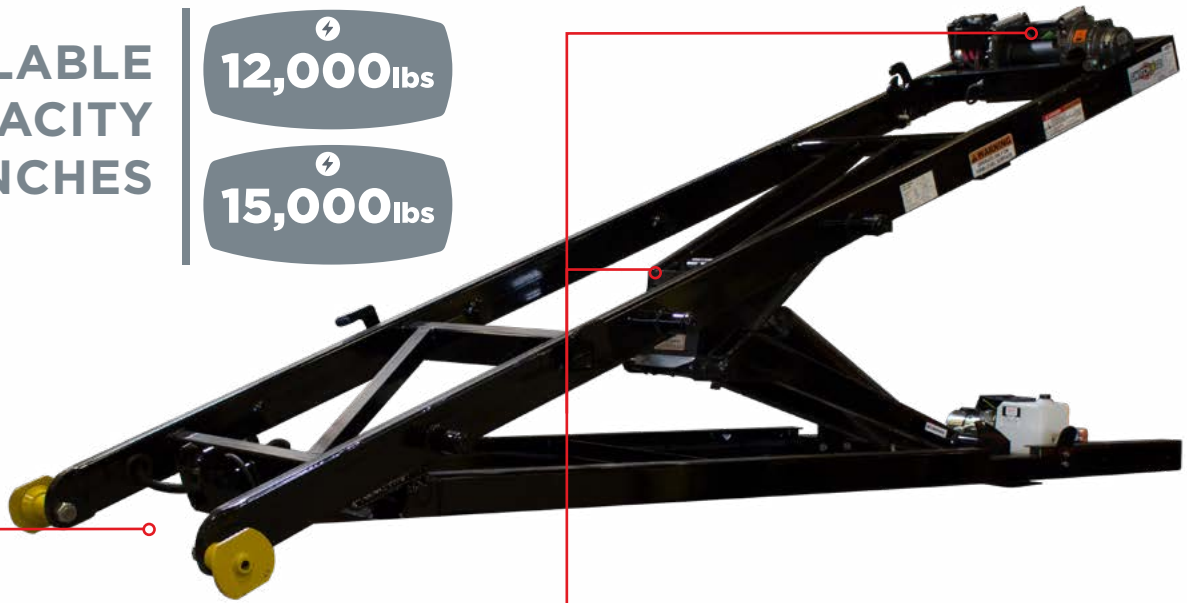
ELECTRIC



AVAILABLE
CAPACITY
WINCHES

12,000lbs

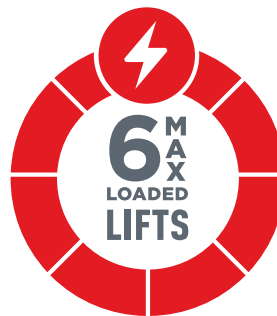
15,000lbs



ORIGINAL MODEL
THE 18" BODY OVERHANG
RETAINS A GREATER DUMPING
CAPACITY WITH A VARIETY OF
WINCH CAPACITIES



S-MODEL
THE 6" BODY OVERHANG IS
FOR EASIER HITCH ACCESS
& GREATER VERSATILITY IN
TOWING



ELECTRIC SYSTEM
FULLY CAPABLE ELECTRIC
OVER HYDRAULIC SYSTEM,
ECONOMICALLY MADE FOR
LIGHT TO MEDIUM DUTY



MEDIUM DUTY WORKLOAD
IDEAL FOR CLASS 3-6 TRUCKS
PERFECT FOR VEHICLES WITH
GVWR OF 10,000-26,000lbs



SYSTEM REQUIREMENTS

Requires installation of heavy duty alternator (150 AMP minimum)
Requires installation of minimum two deep cycle 750 CCA batteries

Requires installation of 600 AMP Fuse (included)
Requires electric installation kit components (included)



 **15,000lbs**

 **18,000lbs**

**AVAILABLE
CAPACITY
WINCHES**



HYDRAULIC SYSTEM
MAXIMIZING LIFT EFFICIENCY
FROM THE TRUCK PTO OR CLUTCH
TO THE FULL HYDRAULIC SYSTEM
FOR UNLIMITED POWER ALL DAY



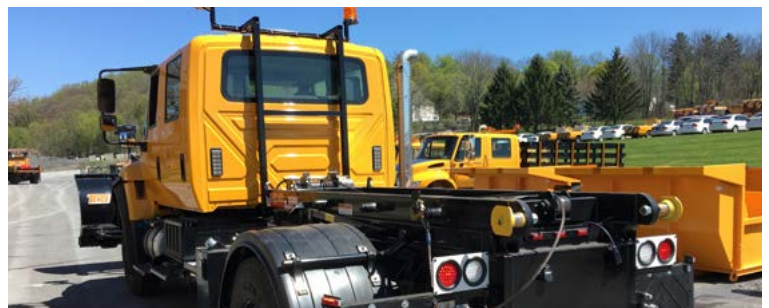
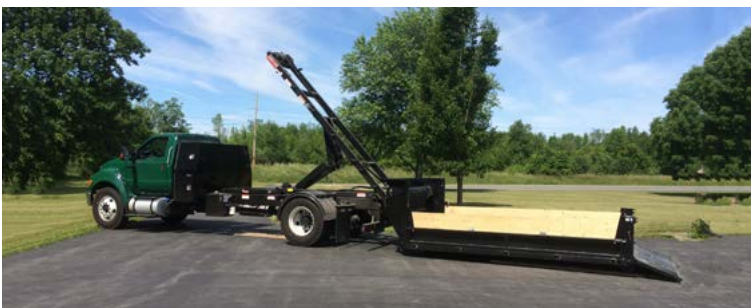
ORIGINAL MODEL
THE 18" BODY OVERHANG
RETAINS A GREATER DUMPING
CAPACITY WITH A VARIETY OF
WINCH CAPACITIES



HEAVY DUTY WORKLOAD
IDEAL FOR CLASS 5-7 TRUCKS
PERFECT FOR VEHICLES WITH
GVWR OF 16,000-33,000lbs



S-MODEL
THE 6" BODY OVERHANG IS
FOR EASIER HITCH ACCESS
& GREATER VERSATILITY IN
TOWING



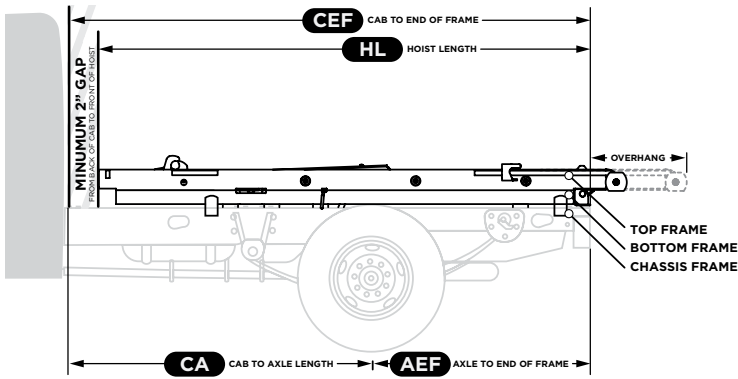
SYSTEM REQUIREMENTS

Requires either underhood clutch pump or "live drive" style PTO
Requires a hydraulic pump providing 3000 psi @ 12-15 GPM
Requires minimum hose size (1/2" D for pressure line | 3/4" D for return line)

Requires hydraulic installation kit components (included)
Requires 15-25A Fuse or Breaker (not-included)

HOIST SYSTEM SPECS

CHASSIS CHART

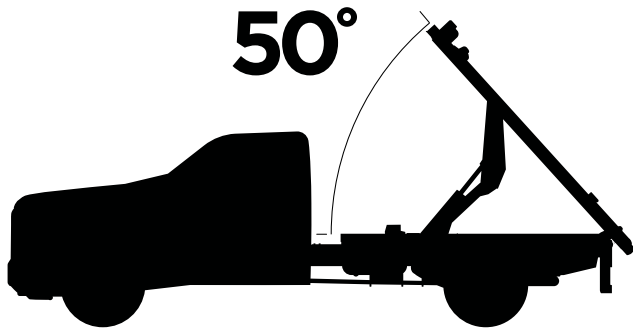


HOIST COMPONENTS

- 1/4" THICK WEAR BARS
- REAR BODY HOLD DOWNS
- POSITIVE FRONT BODY LOCKS & KEEPER
- 6-POLE ROUND RECEPTACLE
- BODY PROP ROD¹
- RUGBY SCISSOR HOIST
- INDUSTRIAL GRADE WINCH
- WINCH STOP SWITCH

DUMPING ANGLE

ALL MODELS HOIST SYSTEMS
LIFT UP TO A



¹Only the HR-620 hoist body prop rod ships separately & must be installed onto truck chassis



ORIGINAL ELECTRIC

Standard Model - 18" hoist overhang

Model Name	Winch Loading Capacity (WLC) (lbs)	Dumping Capacity (DC) (tons)	Minimum Cab to End of Frame Length (CEF) (in.)	Typical Cab to Axle Length (CA) (in.)
9-516-15E-PW	15,000	11.6	108" (9')	60"-72"
10-516-12E-PW	12,000	10.0	120" (10')	72"-84"
10-516-15E-PW	15,000	10.0	120" (10')	72"-84"
11-520-12E-PW	12,000	10.6	132" (11')	84"-96"
11-520-15E-PW	15,000	10.6	132" (11')	84"-96"
11-620-15E-PW	15,000	11.7	132" (11')	84"-96"
12-620-12E-PW	12,000	10.7	144" (12')	96"-108"
12-620-15E-PW	15,000	10.7	144" (12')	96"-108"
13-620-15E-PW	15,000	9.6	156" (13')	108"-120"
14-620-15E-PW	15,000	8.6	168" (14')	120"-138"
14-620HD-15E-PW	15,000	11.0	168" (14')	120"-138"

S-MODEL ELECTRIC

S-Model - 6" hoist overhang

Model Name	(WLC)	(DC)	(CEF)	(CA)
9S-516-12E-PW	12,000	9.5	108" (9')	60"-72"
9S-516-15E-PW	15,000	9.5	108" (9')	60"-72"
10S-516-12E-PW	12,000	9.0	120" (10')	72"-84"
10S-516-15E-PW	15,000	9.0	120" (10')	72"-84"
11S-520-12E-PW	12,000	8.6	132" (11')	84"-96"
11S-520-15E-PW	15,000	8.6	132" (11')	84"-96"
12S-620-15E-PW	15,000	9.6	144" (12')	96"-108"
13S-620-15E-PW	15,000	9.0	156" (13')	108"-120"
14S-620-15E-PW	15,000	8.1	168" (14')	120"-138"

ORIGINAL HYDRAULIC

Original - 18" hoist overhang

Model Name	(WLC)	(DC)	(CEF)	(CA)
9-516-15H	15,000	11.6	108" (9')	60"-72"
10-516-15H	15,000	10.0	120" (10')	72"-84"
11-520-15H	15,000	10.6	132" (11')	84"-96"
11-620-15H	15,000	11.7	132" (11')	84"-96"
11-620HD-18H	18,000	12.5	132" (11')	84"-96"
12-620-15H	15,000	10.7	144" (12')	96"-108"
12-620-18H	18,000	10.7	144" (12')	108"-120"
13-620-15H	15,000	9.6	156" (13')	108"-120"
13-620HD-18H	18,000	11.6	156" (13')	108"-120"
14-620HD-15H	15,000	11.0	168" (14')	120"-138"
14-620HD-18H	18,000	11.0	168" (14')	120"-138"

S-MODEL HYDRAULIC

S-Model - 6" hoist overhang

Model Name	(WLC)	(DC)	(CEF)	(CA)
9S-516-15H	15,000	9.5	108" (9')	60"-72"
10S-516-15H	15,000	9.0	120" (10')	72"-84"
11S-520-15H	15,000	8.6	132" (11')	84"-96"
11S-620-15H	15,000	10.0	132" (11')	84"-96"
11S-620HD-18H	18,000	11.7	132" (11')	84"-96"
12S-620HD-15H	15,000	10.7	144" (12')	96"-108"
12S-620HD-18H	18,000	10.7	144" (12')	96"-108"
13S-620HD-15H	15,000	9.6	156" (13')	108"-120"
13S-620HD-18H	18,000	9.6	156" (13')	108"-120"
14S-620HD-15H	15,000	9.0	168" (14')	120"-138"
14S-620HD-18H	18,000	9.0	168" (14')	120"-138"

The Gross Vehicle Weight (GVW) or Gross axle weight rating (GAWR) will limit the operating capacity the vehicle uplifted with a hoist system.